

X1 SPARE PARTS CATALOG


AIDE  OTR ADELAIDE



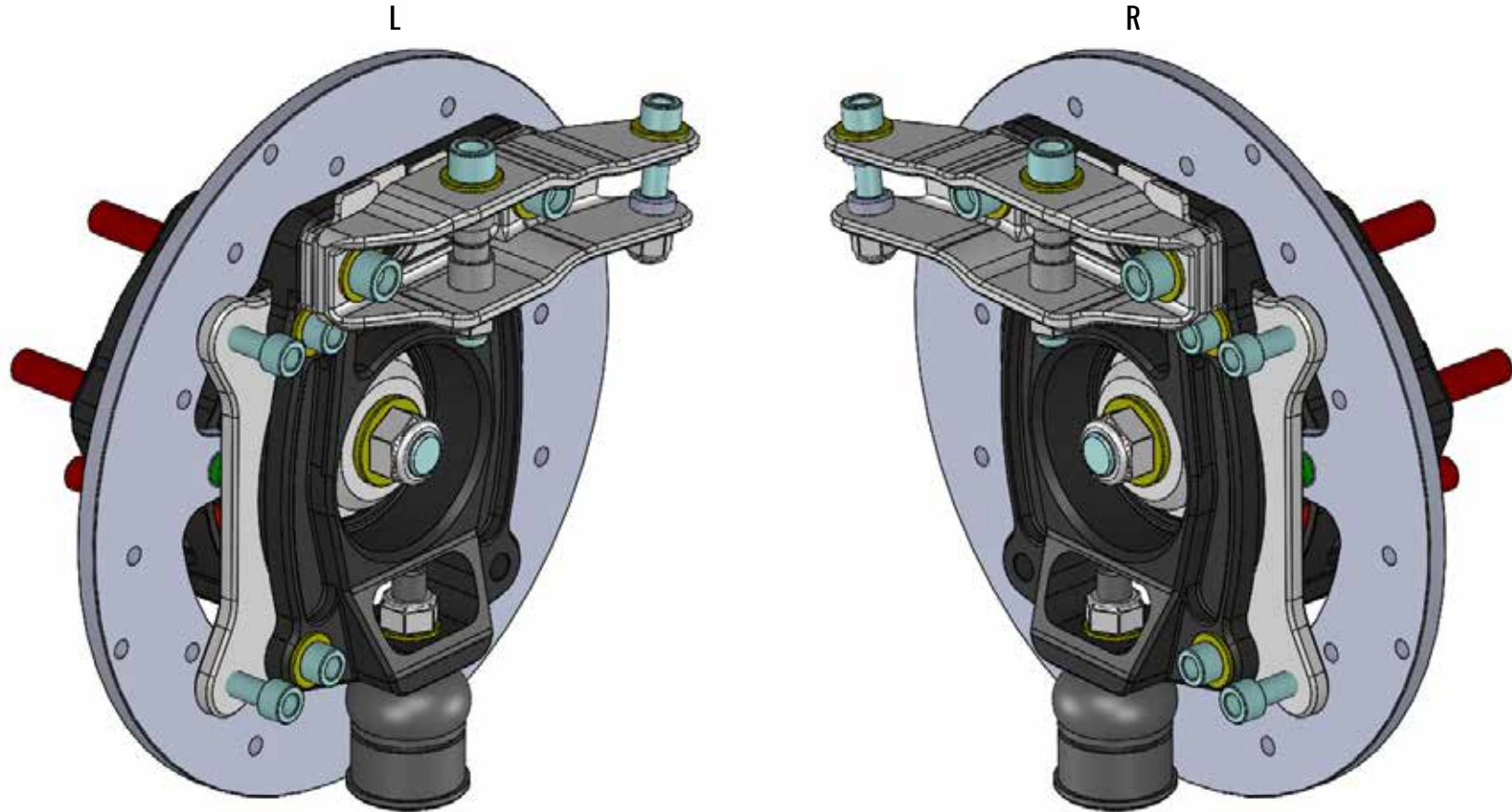
TABLE OF CONTENTS

TABLE OF CONTENTS CONT.	3
FRONT UPRIGHT ASSEMBLYS	4
FRONT UPRIGHT EXPLODED	5
FRONT UPRIGHT SPARE PARTS	6
FRONT UPRIGHT SPARE PARTS CONT.	7
REAR UPRIGHT ASSEMBLYS	8
REAR UPRIGHT EXPLODED	9
REAR UPRIGHT SPARE PARTS	10
REAR DRIVER CARRIER	12
REAR DRIVE CARRIER - FRONT PLATES	13
REAR DRIVE CARRIER - FRONT PLATES SPARE PARTS	14
REAR DRIVE CARRIER - DRIVE AXLE	15
REAR DRIVE CARRIER - DRIVE AXLE SPARE PARTS	16
REAR DRIVE CARRIER - LOCKING COLLAR	17
REAR DRIVE CARRIER - LOCKING COLLAR SPARE PARTS	18
REAR DRIVE CARRIER - CHAIN GUARD	19
REAR DRIVE CARRIER - CHAIN GUARD SPARE PARTS	20
REAR DRIVE CARRIER - CHAIN TENSIONER	21
REAR DRIVE CARRIER - CHAIN TENSIONER SPARE PARTS	22
X1 DIFFERENTIAL	23
X1 DIFFERENTIAL - DRIVE CARRIER	24
X1 DIFFERENTIAL - DRIVE CARRIER SPARE PARTS	25
X1 DIFFERENTIAL - MOUNTING ASSEMBLY	26
X1 DIFFERENTIAL - MOUNTING ASSEMBLY SPARE PARTS	27
X1 DIFFERENTIAL - HOUSING ASSEMBLY	28
X1 DIFFERENTIAL - HOUSING ASSEMBLY SPARE PARTS	29

TABLE OF CONTENTS CONT.

FRONT CONTROL ARMS	30
FRONT CONTROL ARMS - EXPLODED	31
FRONT CONTROL ARMS - SPARE PARTS	32
REAR CONTROL ARMS	33
REAR CONTROL ARMS - EXPLODED	34
REAR CONTROL ARMS - SPARE PARTS	35
FRONT SUSPENSION	36
FRONT SUSPENSION - EXPLODED	37
FRONT SUSPENSION - SPARE PARTS	38
FRONT SUSPENSION MOUNTING	39
FRONT SUSPENSION MOUNTING - EXPLODED	40
FRONT SUSPENSION MOUNTING - SPARE PARTS	41
REAR SUSPENSION	42
REAR SUSPENSION - SPARE PARTS	44
STARTER MOTOR UPGRADE KIT - EXPLODED DIAGRAM	45

FRONT UPRIGHT ASSEMBLYS



NOTES:

- To assemble a Left or Right hand upright, use either the Left or Right hand Milled Front Steering Arm (17), and move the Brake Calliper Mount (9) to the corresponding side.
- The Assembly will call out multiple 'cut down' bolt lengths. This is required to obtain a specific shank length, failure to use the correct bolts may result in injury or death.

FRONT UPRIGHT SPARE PARTS

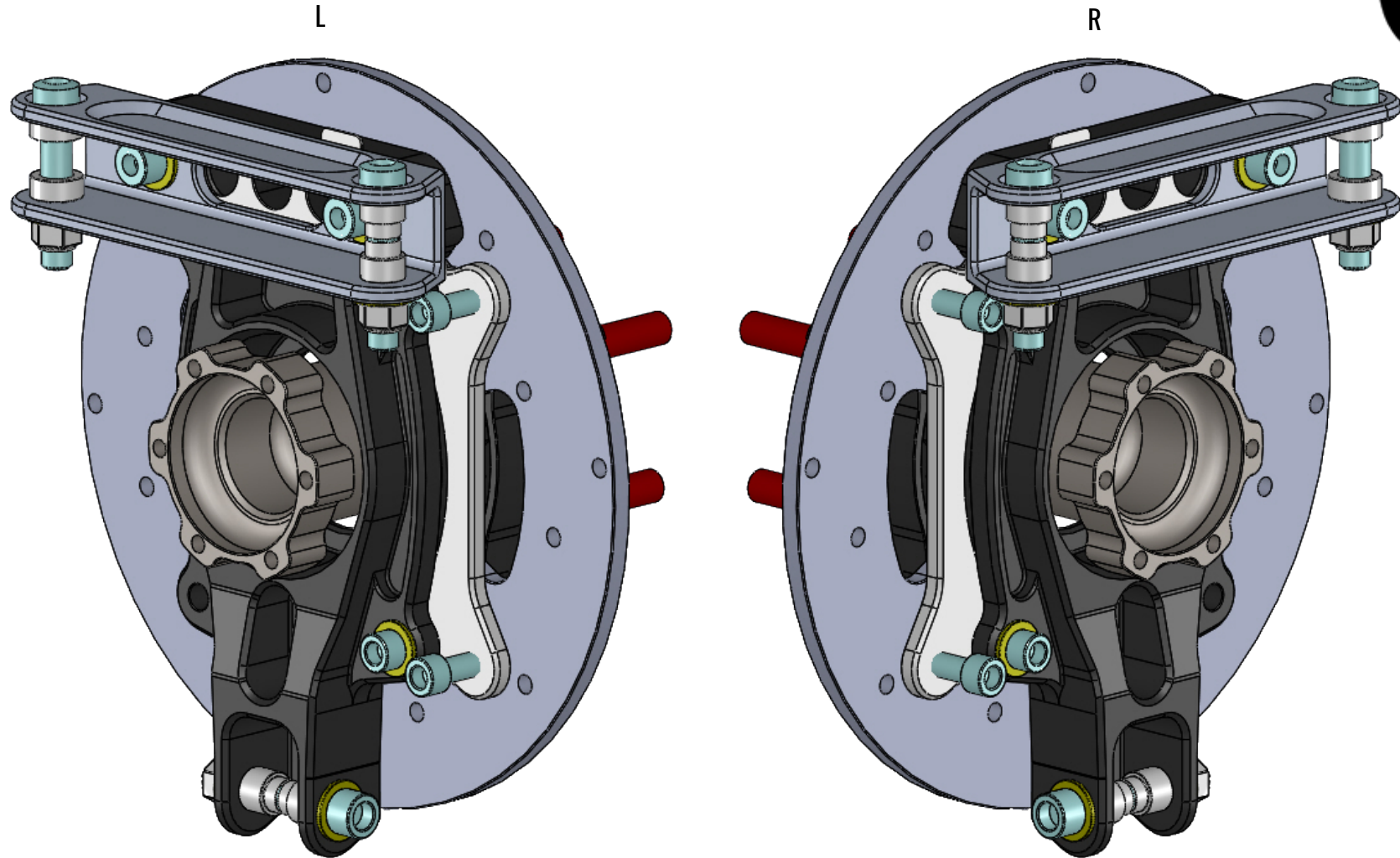


1	3022	X1 Brake Hat - Floating
2	3011	Brake Disc Rotor
3	3001	Brake Bolt Wave Washers
4	3022	Brake Rotor Shoulder Bolts
5	18018	X1 Front Wheel Hub - Aluminium
6	AF5071-1006	Aeroflow M12 x 1.25mm Wheel Studs
7	1300-72	Wheel Bearing Cir-Clip 1300-72
8	16007	Wheel Bearing
9	3009	Brake Caliper Mount
10		3/8 x 1" SHCS
10a		3/8" High Tensile Washer
11	16066	X1 Billet Front Upright
12	4034	Camber Shim Front 0.6mm
12	4035	Camber Shim Front 1.2mm
12	4036	Camber Shim Front 2mm
12	4037	Camber Shim Front 3mm
12	4038	Camber Shim Front 6mm
13	BJ-556	FRONT BALL JOINTS
14		M12 x 1.25 Nyloc for Ball Joint
14a		7/16" High Tensile Washer
15	16043	X1 Front Axle Nut Block
16		M16 x 100mm SHCS
16a		M16 Nyloc
16b		M16 High Tensile Washers
17	16046	X1 Milled Front Steering Arm - Left
17	16047	X1 Milled Front Steering Arm - Right
18		7/16 x 1-1/4" SHCS
18a		7/16" High Tensile Washer

FRONT UPRIGHT SPARE PARTS CONT.

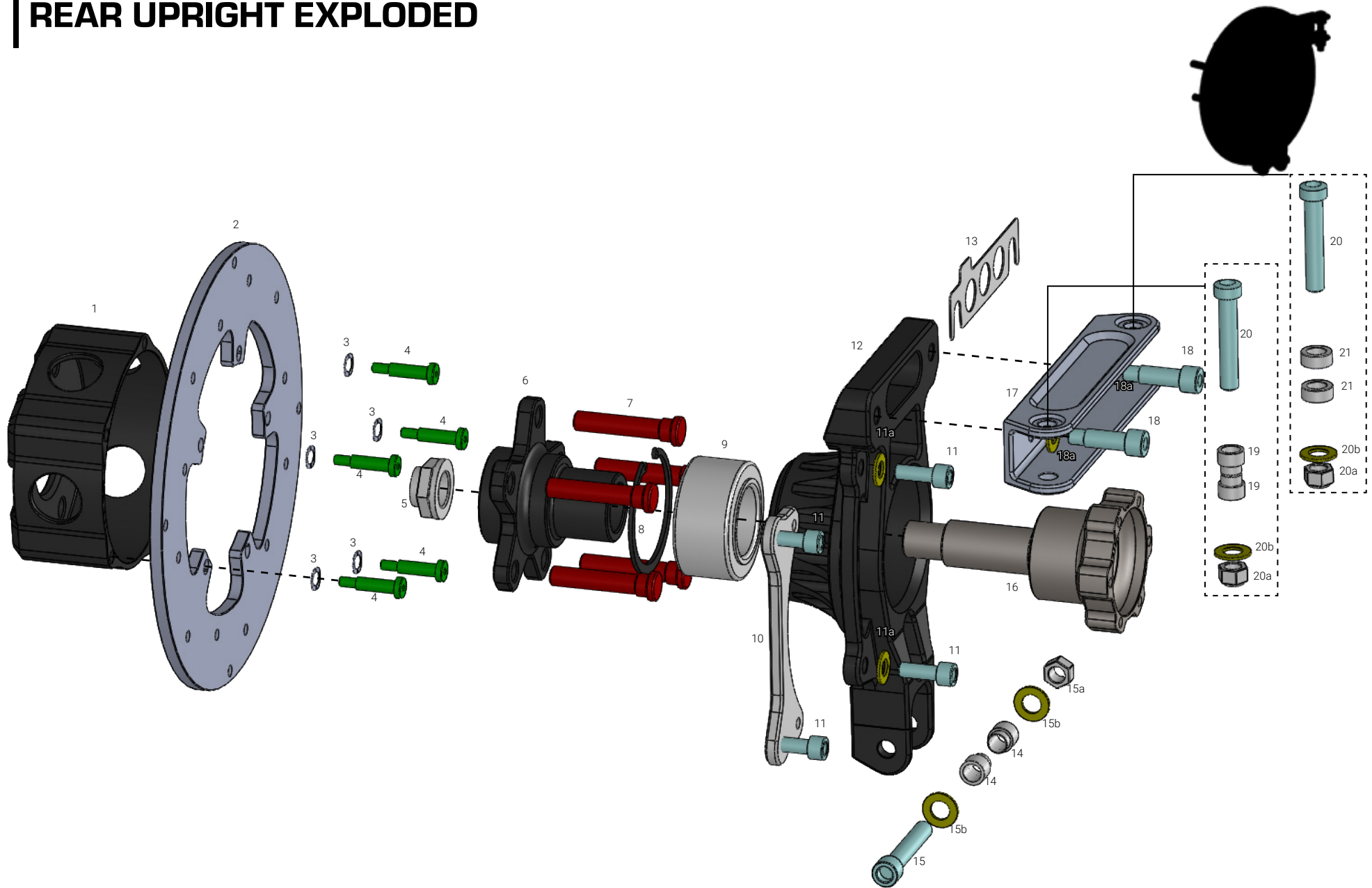
19	16044	X1 Front Top Wishbone S-Bearing Spacer
20		7/16 x 3-1/2" SHCS (Cut down to 65mm w/ Cerakote)
20a		7/16" Nyloc
20b		7/16" High Tensile Washer
21	16049	X1 Outer Tie Rod Spacer
22		3/8 x 3" SHCS (Cut down to 50mm)
22a		3/8" Nyloc
22b		3/8" High Tensile Washers

REAR UPRIGHT ASSEMBLYS



- NOTES:**
- To assemble a Left or Right hand upright, swap the Brake Caliper Mount so that it points toward the front of the car, while ensuring that the S-bearing spacers are at the front, and the Track Rod Spacers are at the rear of the Milled Steering Arm.
 - The Assembly will call out multiple 'cut down' bolt lengths. This is required to obtain a specific shank length, failure to use the correct bolts may result in injury or death.

REAR UPRIGHT EXPLODED



NOTES:

- Caliper and Caliper Bracket Bolts (10) must be installed with Red Loctite.
- Brake Rotor Bolts (4) must be installed with Red Loctite.
- The CV Shaft Nut (5) must be installed with either Red Loctite, or by peening the Nut into the groove on the CV Shaft.

REAR UPRIGHT SPARE PARTS

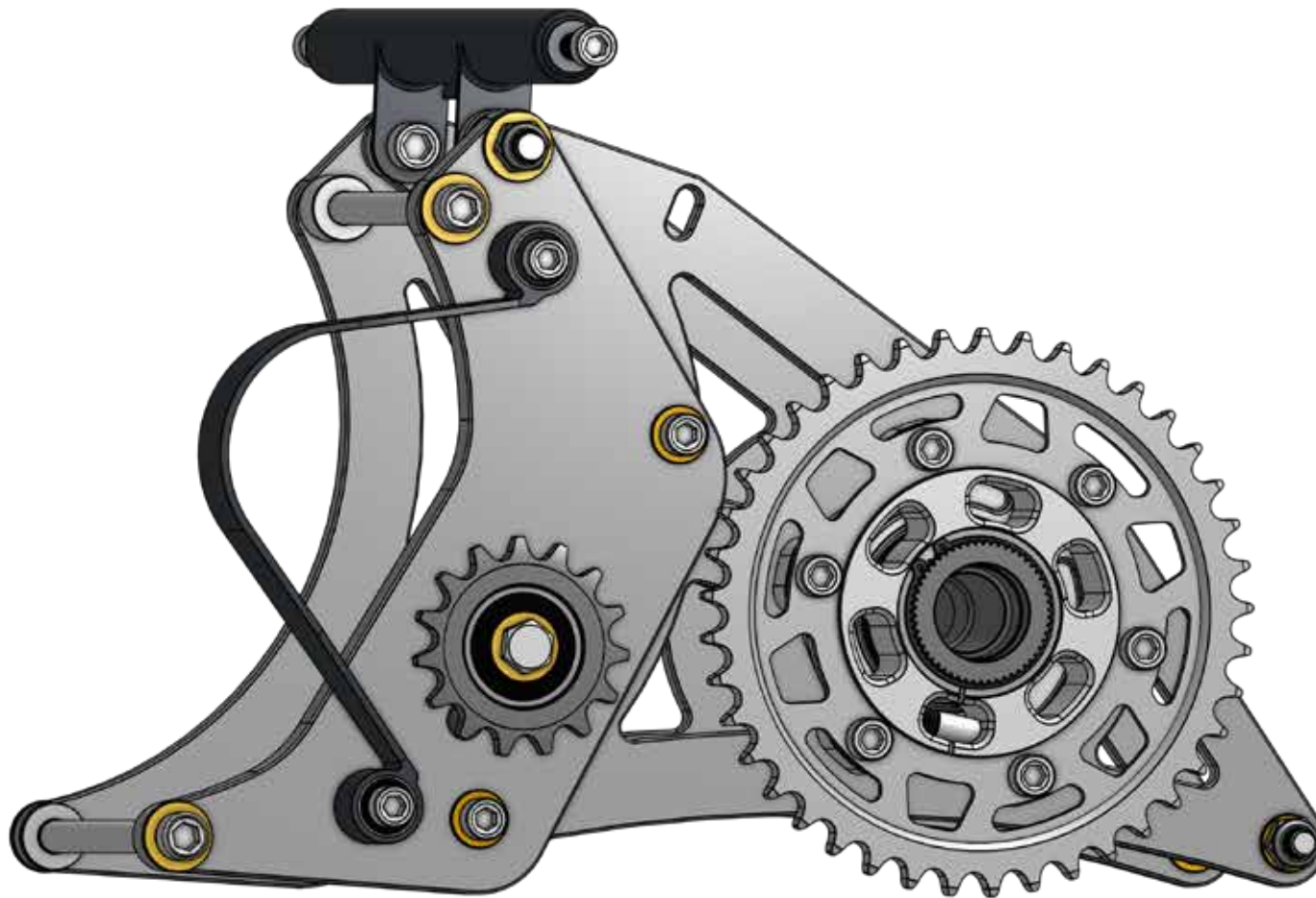


1	3022	X1 Brake Hat - Floating
2	3011	Brake Disc Rotor
3	3001	Brake Bolt Wave Washers
4	3022	Brake Rotor Shoulder Bolts
5	CVN.HO01	HR LSD Outer Drive Flange Hub Nut
6	8047	Hyper Racer X1 Rear Wheel Hub - BLK
7	AF5071-1006	Aeroflow M12 x 1.25mm Wheel Studs
8	1300-72	Wheel Bearing Cir-Clip 1300-72
9	16007	Wheel Bearing
10	3009	Brake Caliper Mount
11		3/8 x 1" SHCS
11a		3/8" High Tensile Washer
12	16067	X1 Billet Rear Upright
13	4039	Camber Shim Rear 0.6mm
13	4040	Camber Shim Rear 1.2mm
13	4041	Camber Shim Rear 2mm
13	4042	Camber Shim Rear 3mm
13	4043	Camber Shim Rear 6mm
14	16050	X1 Rear Lower Wishbone S-Bearing Spacer
15		7/16 x 3-1/2" SHCS (Cut down to 65mm)
15a		7/16" Nyloc Nut
15b		7/16" High Tensile Washer
16	8050	CV Shaft Outer Drive Flange HR-Splined
17	16048	X1 Milled Rear Steering Arm
18		7/16 x 1-1/2" (10mm Spigot)
18a		7/16" High Tensile Washers
19	16053	X1 Rear Top Wishbone S-Bearing Spacer
20		7/16 x 3" (Cut to 60mm with Chamfered Head)

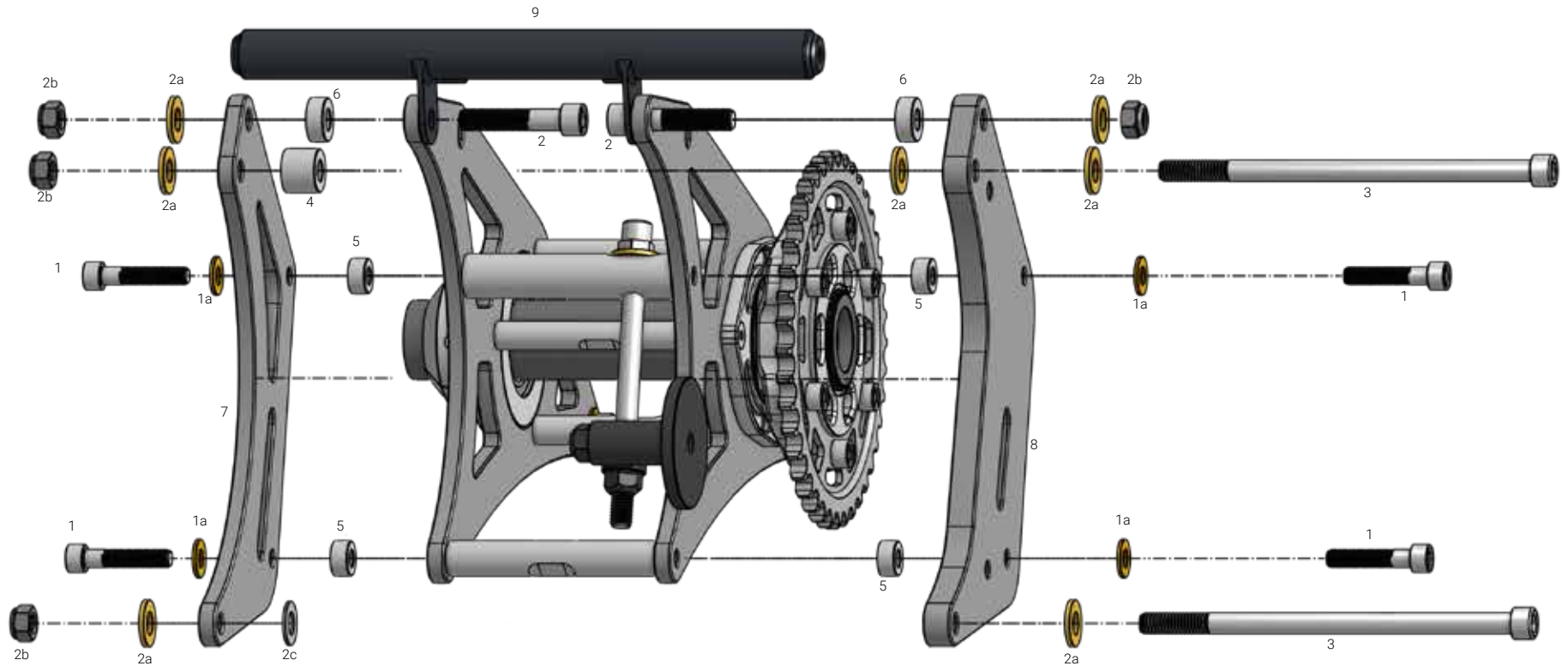
REAR UPRIGHT SPARE PARTS CONT.

20a		7/16" Nyloc
20b		7/16" High Tensile Washer
21	16054	X1 Rear Track Rod Spacer

REAR DRIVER CARRIER



REAR DRIVE CARRIER - FRONT PLATES



NOTES:

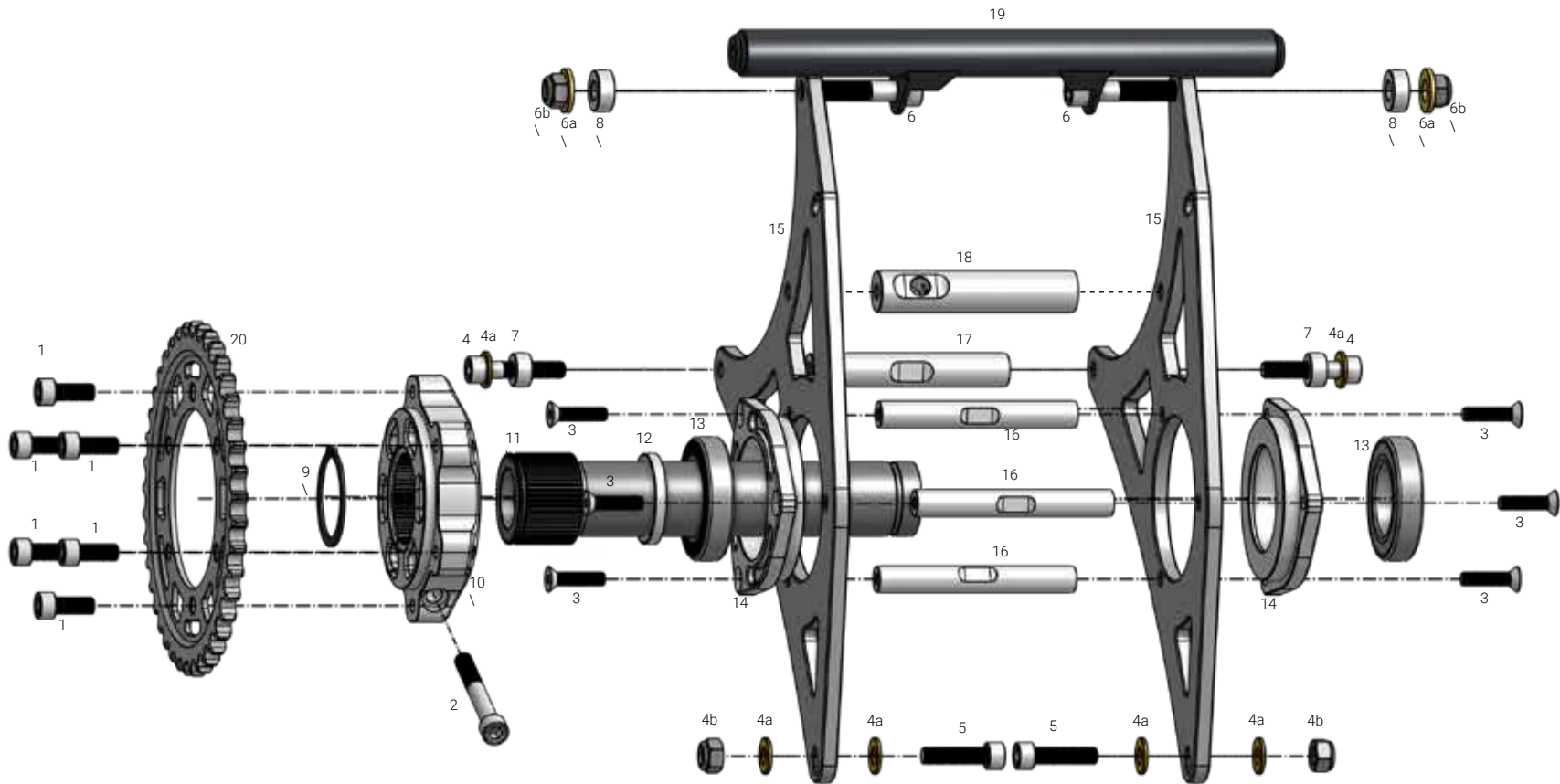
- For the two 220mm Bolts that go through the engine cases, there are washers used as spacers as the top and bottom case widths are different.

REAR DRIVE CARRIER - FRONT PLATES SPARE PARTS



1		M10 x 50mm SHCS
1a		M10 HT Washer
2		M12 x 60mm SHCS
2a		M12 HT Washer
2b		M12 Nyloc Nut
2c		M12 1.5mm Washer
3		M12 x 220mm SHCS
4	4060	X1 20mm Engine Mount Spacer
5	MAS19-10-10	Aluminium Spacer 19mm OD 10.2mm ID x 10mm Long
6	4061	X1 10mm Engine Mount Spacer
7		X1 Rear Engine Mount RHS Plate - Hayabusa - Revision 1 10mm 5083 Aluminium
8		X1 Rear Engine Mount 16mm LHS Plate 5083 Aluminium
9	4021	REAR CHASSIS ENGINE CROSS RAIL

REAR DRIVE CARRIER - DRIVE AXLE



NOTES:

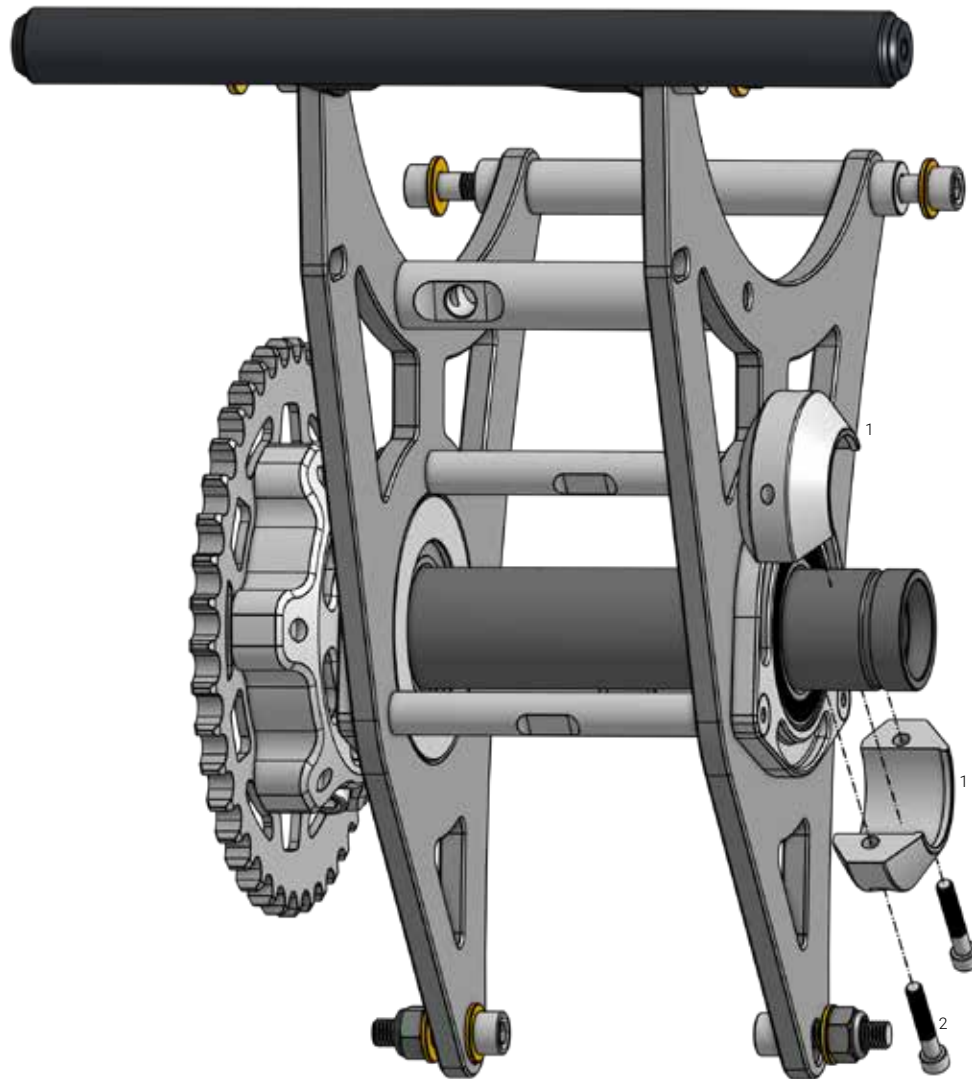
- When installing the sprocket, the sprocket carrier pinch bolt (2) must be done up first, then the sprocket bolts (1) can be installed and must have Red Loctite.
- With the Cir-Clip Installed (9), slide the sprocket carrier all the way towards the circlip until it stops, this will ensure correct chain line with the Idler and engine sprocket.
- The Sprocket (20) must be installed with the flat side against the sprocket carrier (10).
- Drive Axle Bearing Carrier Bolts (3) must be installed with Blue Loctite.

REAR DRIVE CARRIER - DRIVE AXLE SPARE PARTS



1		M10 x 25mm SHCS
2		M10 x 80mm SHCS
3		M8 x 30mm CSK
4		M10 x 50mm SHCS
4a		M10 HT Washer
4b		M10 Nyloc Nut
5		M10 x 35mm SHCS
6		M12 x 60mm SHCS
6a		M12 HT Washer
6b		M12 Nyloc Nut
7	MAS19-10-10	Aluminium Spacer 19mm OD 10.2mm ID x 10mm Long
8	4060	X1 10mm Engine Mount Spacer
9	1400-55	Sprocket Carrier Cir-Clip 1400-55
10	8021	X1 Sprocket Carrier CNC
11	8016	X1 Drive Axle
12	8001	CV Shaft Spacer Ring
13	8032	Rear Axle Bearing 6009-2RS
14	8011	X1 Rear Drive Axle Bearing Carrier
15		X1 Rear Engine Mount 2024 Centre Plate 10mm 5083 Aluminium
16	8012	X1 Rear Drive Carrier Spacer 16mm
17	8013	X1 Rear Drive Carrier Spacer 20mm
18	8014	X1 Rear Drive Carrier Spacer 25mm
19	4021	Rear Chassis Engine Cross Rail
20	8036	41T Rear Sprocket

REAR DRIVE CARRIER - LOCKING COLLAR

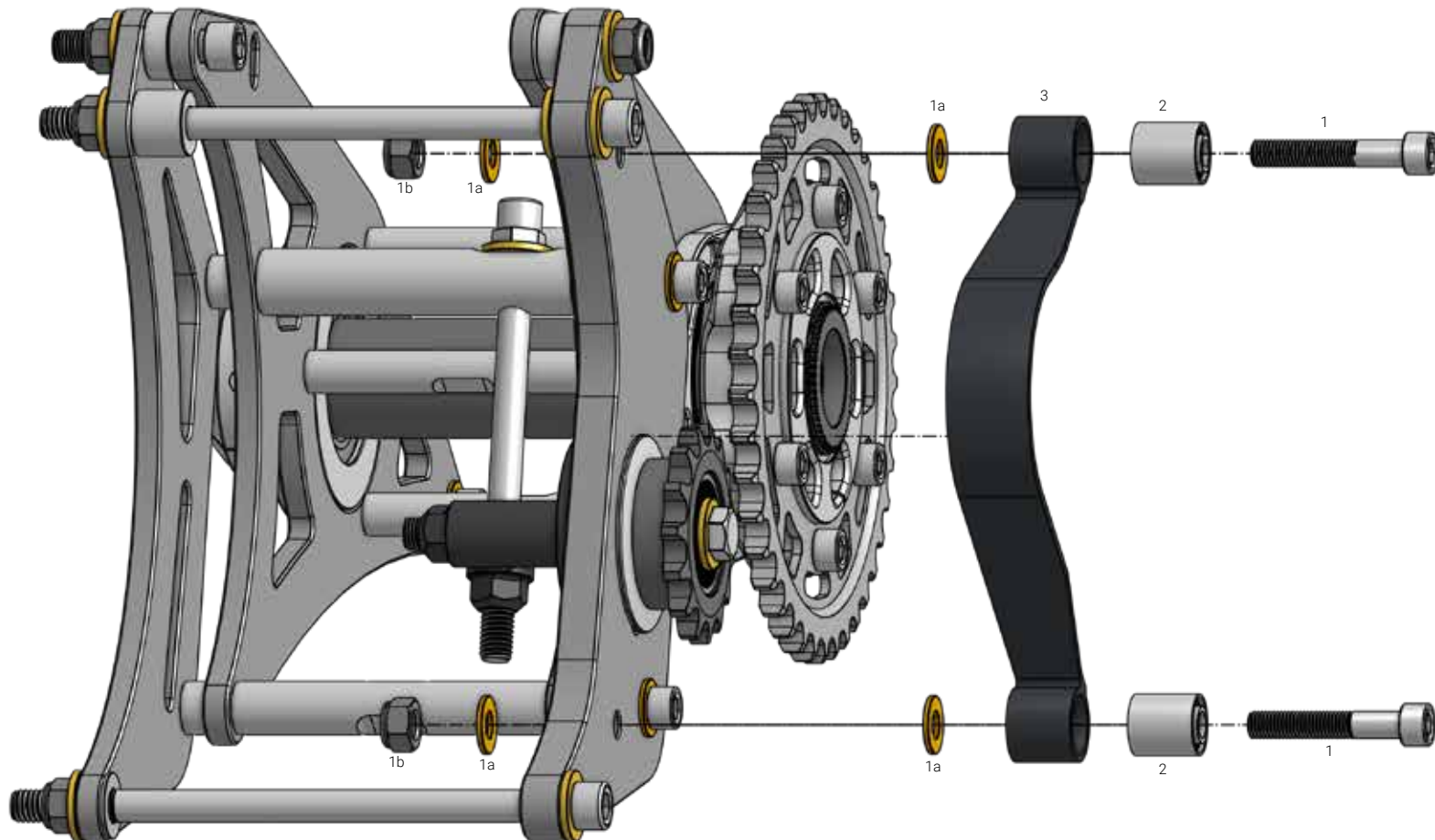


REAR DRIVE CARRIER - LOCKING COLLAR SPARE PARTS

1	8004	X1 CV Shaft Locking Collar
2		M6 x 45mm SHCS



REAR DRIVE CARRIER - CHAIN GUARD

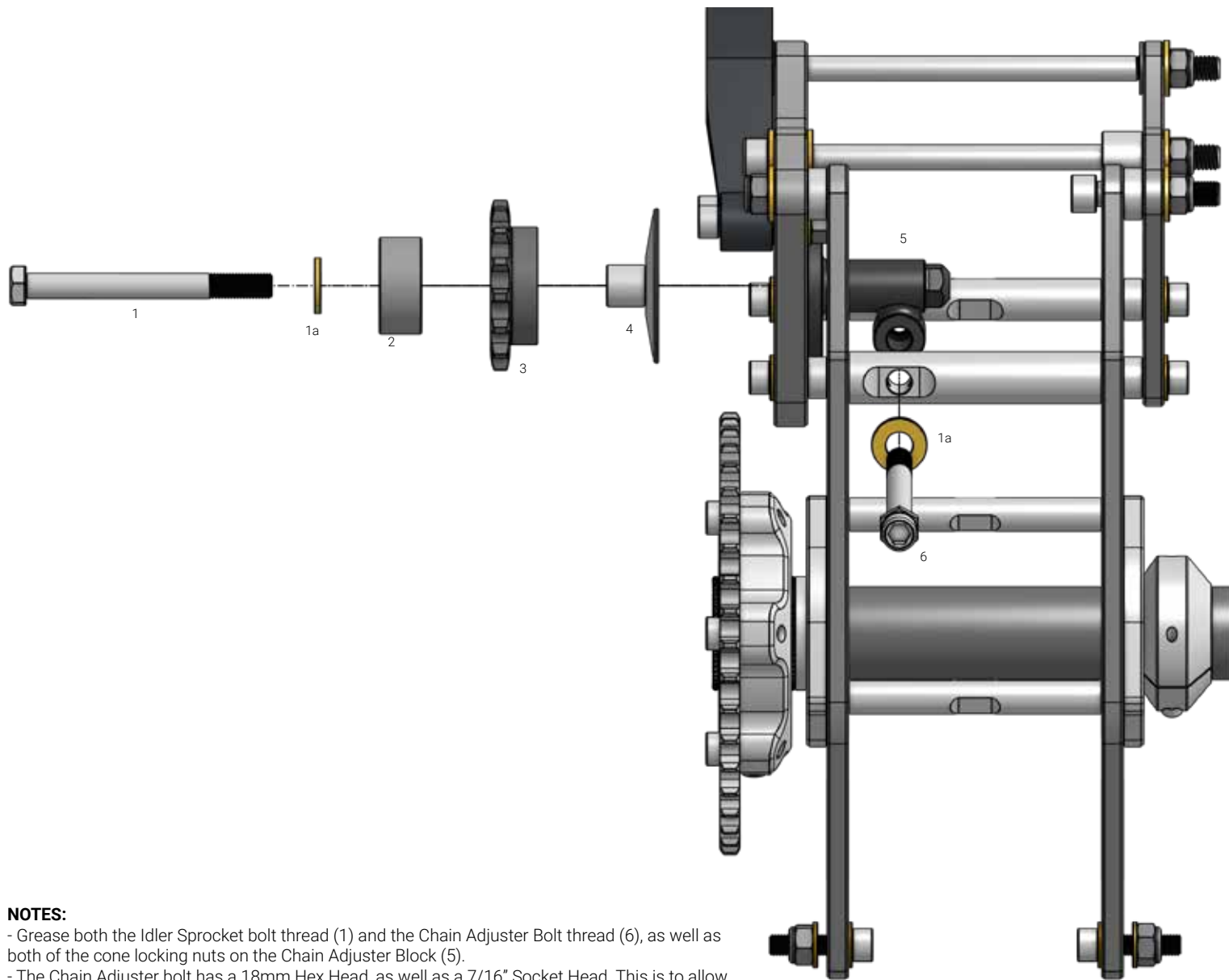


REAR DRIVE CARRIER - CHAIN GUARD SPARE PARTS

1		M10 x 60mm SHCS
1a		M10 HT Washer
1b		M10 Nyloc Nut
2	41241-222-000	Hyper Racer X1 Chain Guard Bushing
3	8040	Hyper Racer X1 Chain Guard



REAR DRIVE CARRIER - CHAIN TENSIONER



NOTES:

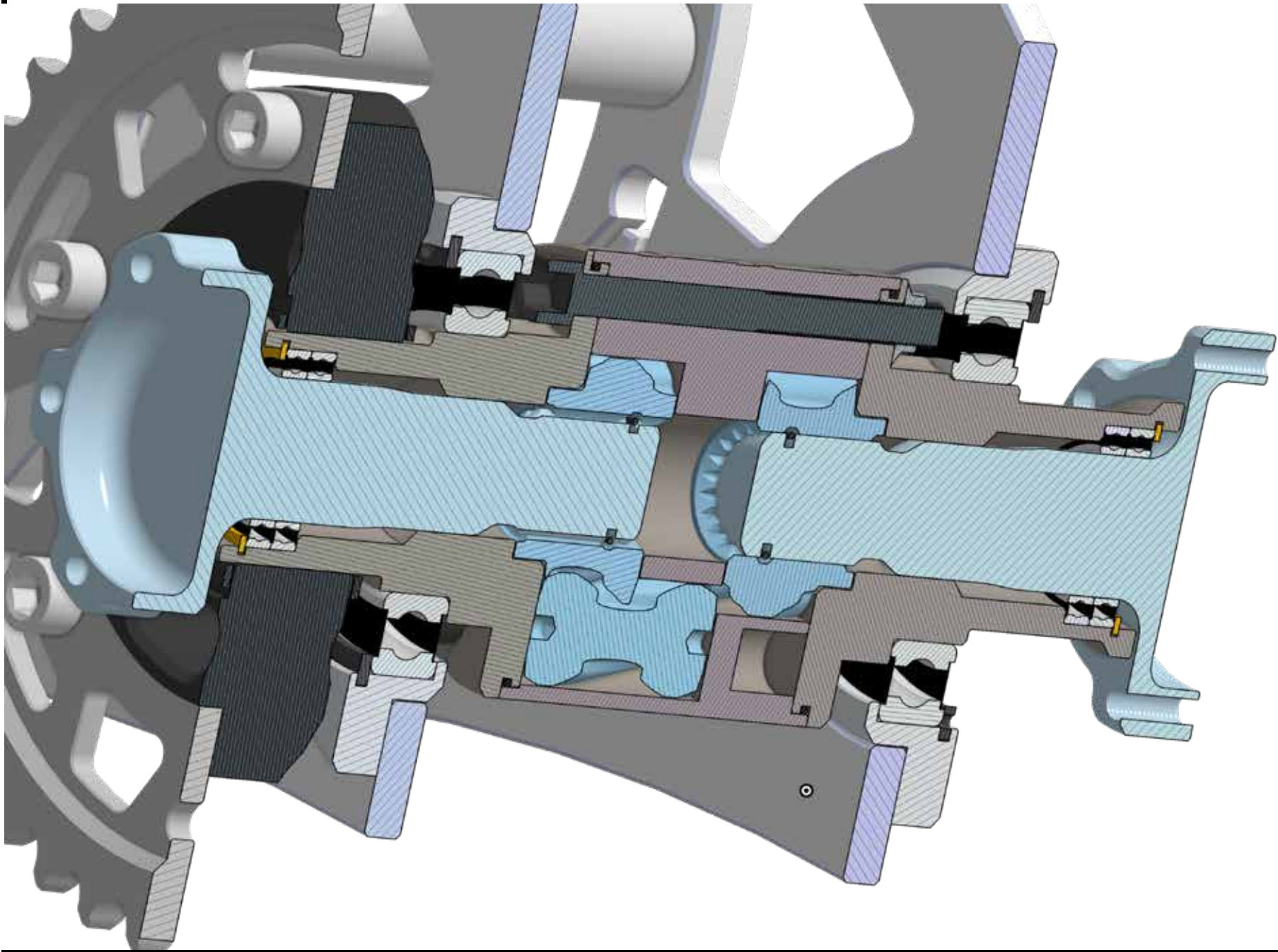
- Grease both the Idler Sprocket bolt thread (1) and the Chain Adjuster Bolt thread (6), as well as both of the cone locking nuts on the Chain Adjuster Block (5).
- The Chain Adjuster bolt has a 18mm Hex Head, as well as a 7/16" Socket Head. This is to allow adjustment via both of the supplied tools, either the 18mm ratcheting adjuster spanner, or the 7/16" extended ball end socket with two 3/8" extensions.

REAR DRIVE CARRIER - CHAIN TENSIONER SPARE PARTS

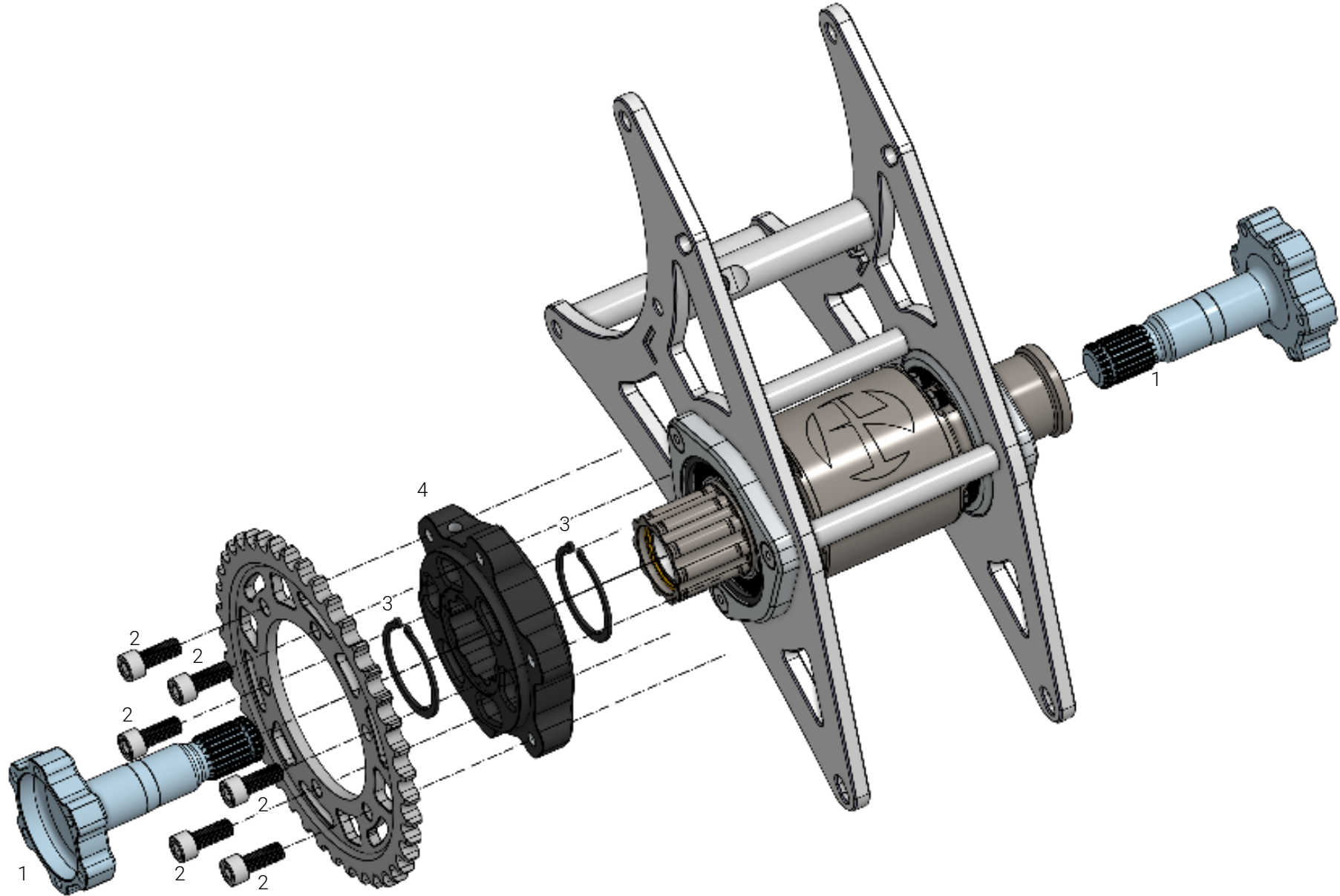
1		M12 x 120mm HHCS
1a		M12 HT Washer
2	8031	IDLER SPROCKET BEARING 5204-2RS
3	8017	X1 Idler Sprocket
4	8010	X1 Idler Sprocket Spigot
5	8041	Chain Adjuster Block
6	8042	Chain Adjuster Bolt



X1 DIFFERENTIAL



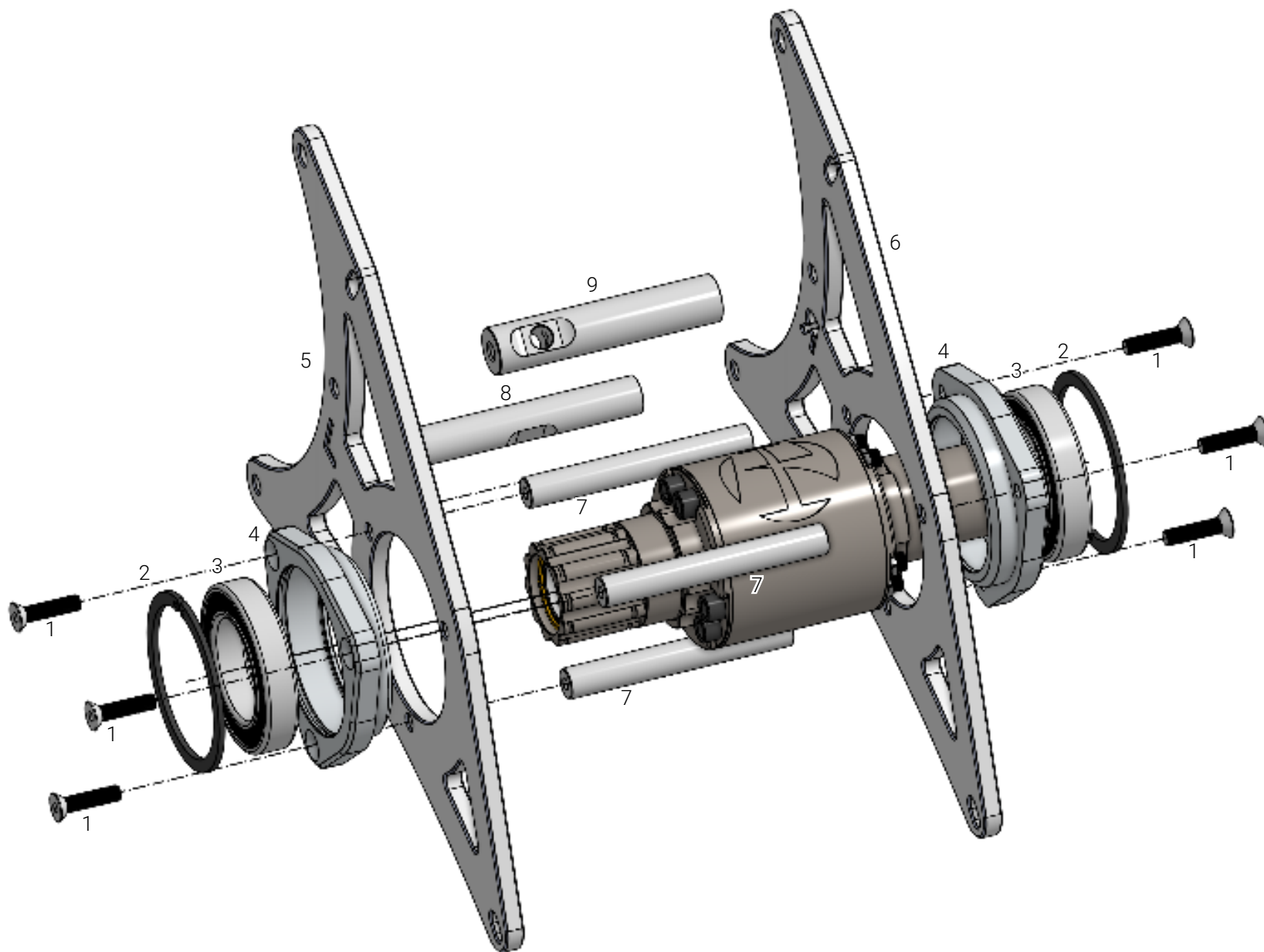
X1 DIFFERENTIAL - DRIVE CARRIER



X1 DIFFERENTIAL - DRIVE CARRIER SPARE PARTS

1	8055	X1 Inner Drive Flange Splined
2		M8 X 25MM SHCS
3	1400-55	Sprocket Carrier Cir-Clip 1400-55
4	8052	X1 LSD Sprocket Carrier

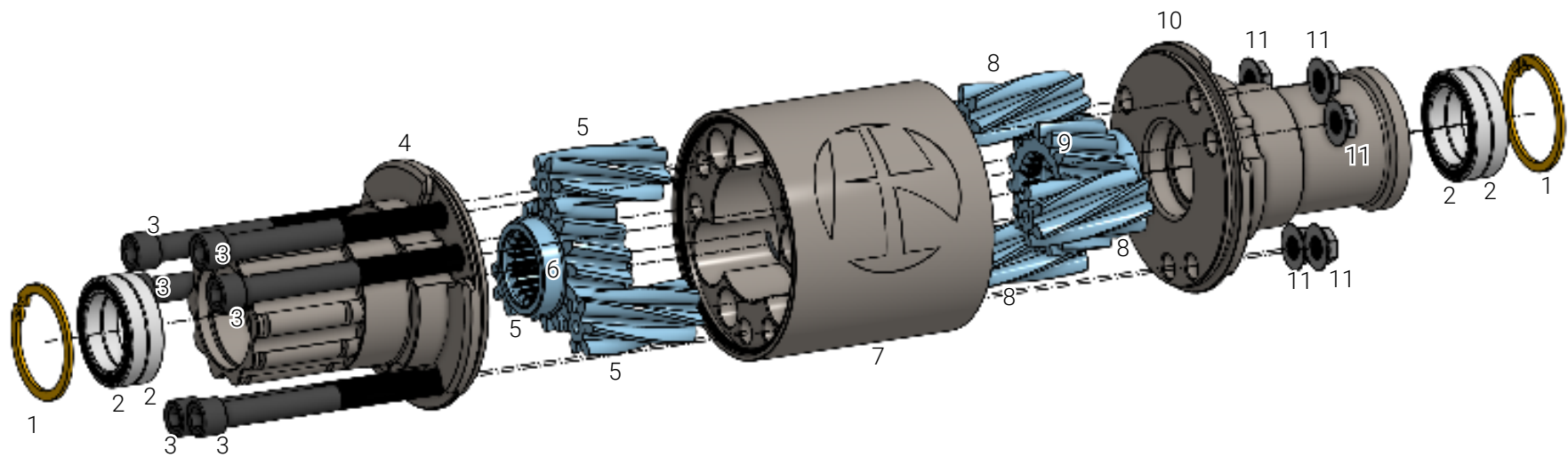
X1 DIFFERENTIAL - MOUNTING ASSEMBLY



X1 DIFFERENTIAL - MOUNTING ASSEMBLY SPARE PARTS

1		M8 x 25mm CSK
2	1300-90	X1 LSD Bearing Retaining 90mm Cir Clip
3	6011-2RS	KOYO BALL BEARING 6011-2RS
4	8022	X1 LSD Bearing Carrier
5		X1 LSD Carrier LH 10mm 5083 Aluminium
6		X1 LSD Carrier RH 10mm 5083 Aluminium
7	8012	X1 Rear Drive Carrier Spacer 16mm
8	8013	X1 Rear Drive Carrier Spacer 20mm
9	8014	X1 Rear Drive Carrier Spacer 25mm

X1 DIFFERENTIAL - HOUSING ASSEMBLY



NOTE

1. The Differential Housing Bolts (3) must be inserted from the LH side of the Differential (4).

X1 DIFFERENTIAL - HOUSING ASSEMBLY SPARE PARTS

1	1300-42	Bearing Retaining Cir-clip for Diff End Cap Bearings - 42mm Internal Circlip
2	6806-2RS	Diff End Cap Bearing - 6806-2RS Bearing
3		3/8" x 4" SHCS
4	8023	X1 LSD Diff Cap LH
5	8056	HR Diff Internal Helical Gear - Left Outer
6	8057	HR Diff Internal Helical Gear - Left Inner Splined
7	8025	X1 LSD Housing
8	8058	HR Diff Internal Helical Gear - Right Outer
9	8059	HR Diff Internal Helical Gear - Right Inner Splined
10	8024	X1 LSD Diff Cap RH
11	8034	3/8"-24 UNF Steel Jet Nut

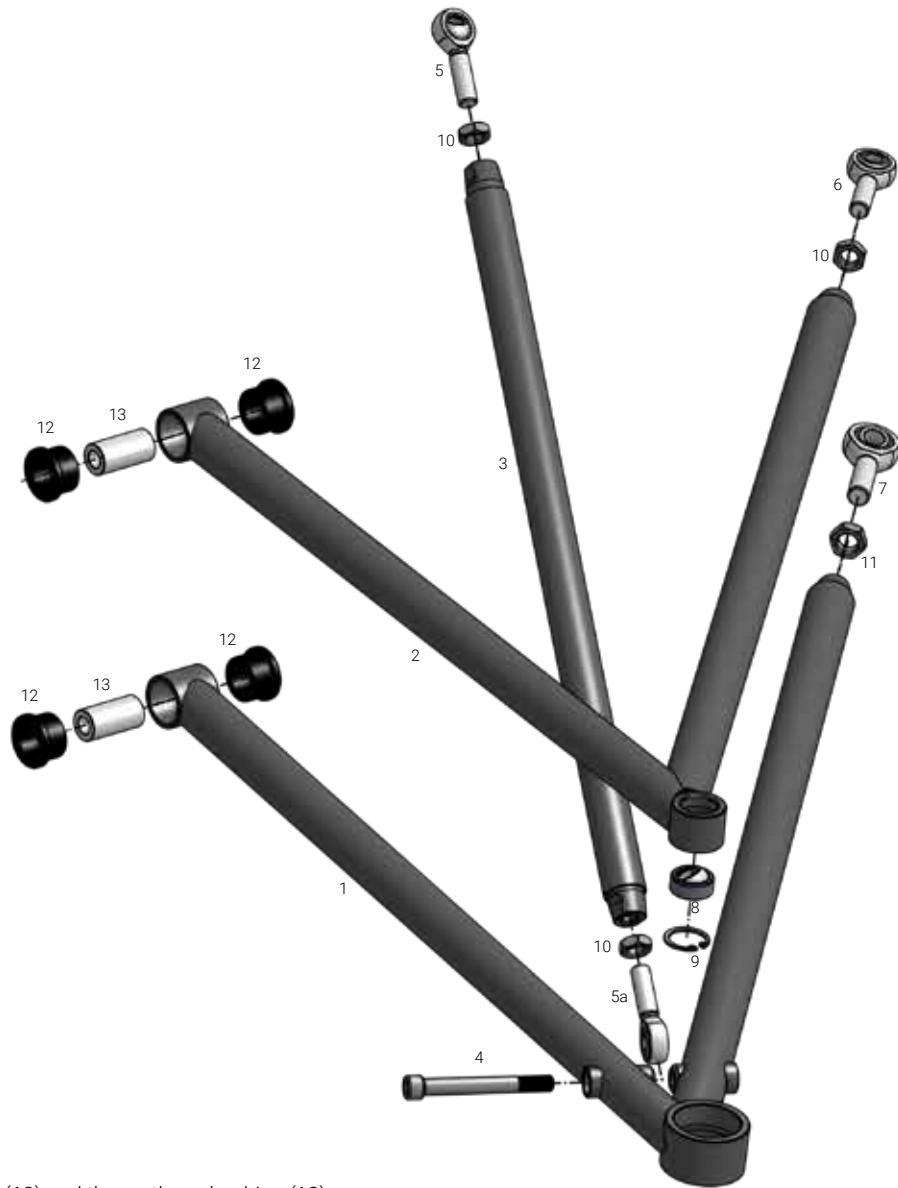
FRONT CONTROL ARMS



NOTES:

- Front upper control arm must have the circlip groove facing down, this is how to differentiate a Left and a Right FUCA.
- Front lower control arm has the ball joint pressing in from the bottom, this is how to differentiate a Left and Right FLCA.

FRONT CONTROL ARMS - EXPLODED



NOTES:

- Silicone grease between the bushing sleeve (13) and the urethane bushing (12).
- Front control arms use urethane bushes while the rear uses nylon, do not mix these components.
- Any rod end or bolt being threaded into the arms or pushrods should have anti-seize.

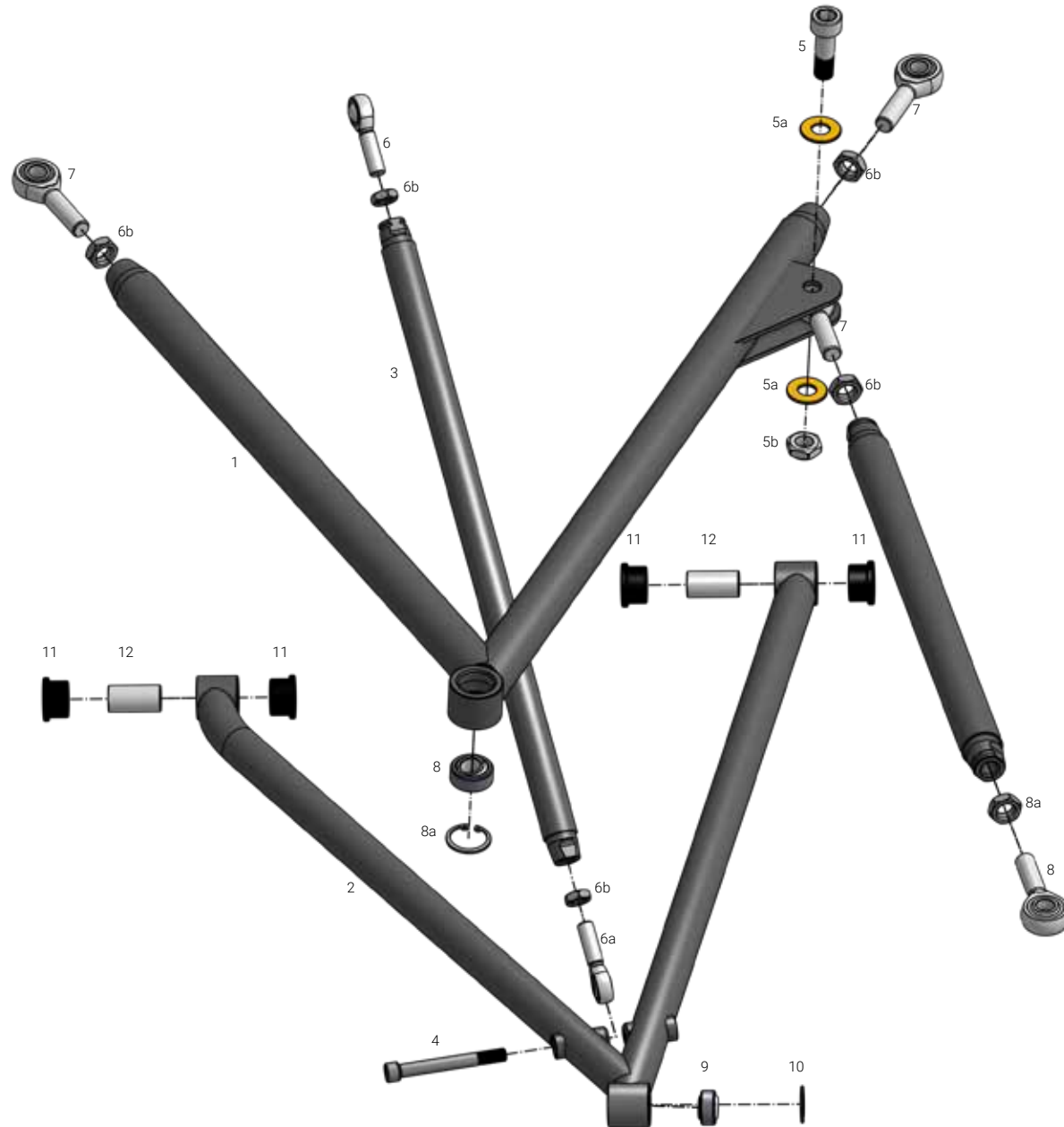
FRONT CONTROL ARMS - SPARE PARTS

1	16013	X1 Front Lower Control Arm - Left
1	16014	X1 Front Lower Control Arm - Right
2	16014	X1 Front Upper Control Arm - Left
2	16016	X1 Front Upper Control Arm - Right
3	16017	X1 Pushrod
4		3/8 x 3-1/2" SHCS (Cut down to 80mm)
5	RSMX6T	RSMX6T 3/8-7/16" RH FK RODEND
5a	RSMXL6T	RSMXL6T 3/8-7/16" LH FK RODEND
6	JMX7T	JMX7T 7/16" RH FK RODEND
7	JMX8T	JMX8T 1/2-1/2" RH FK RODEND
8	COM8T-MOCHU	Mochu COM8T 1/2" Spherical Bearing
9	1300-25	Internal 25mm Circlip for COM8T Bearings
10		7/16" Locking Nut
11		1/2" Locking Nut
12	16026	Urethane Suspension Pivot Bush
13	16056	X1 Suspension Bush Sleeve

REAR CONTROL ARMS



REAR CONTROL ARMS - EXPLODED

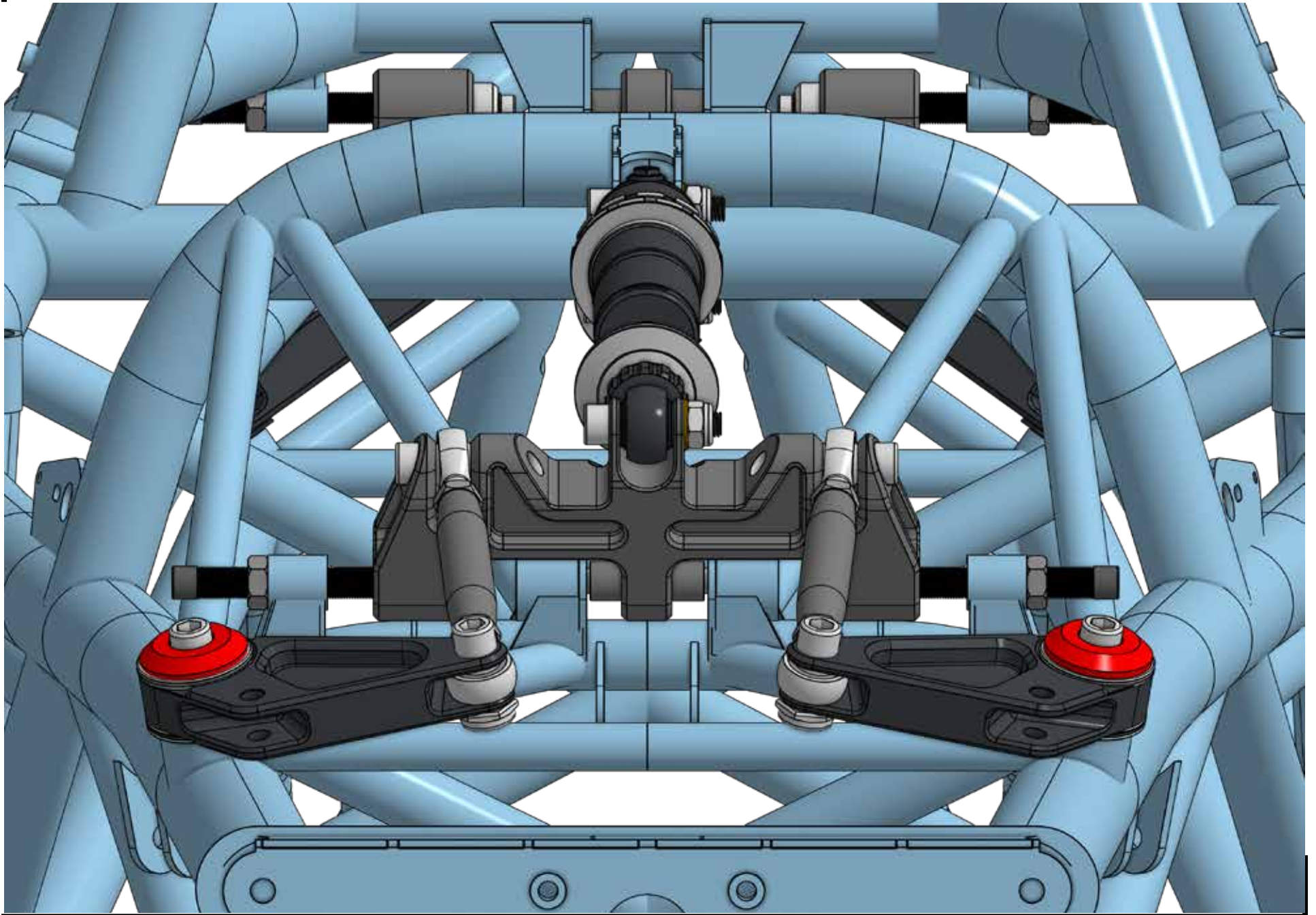


NOTES:
- No Silicone grease for Nylon Bushings.

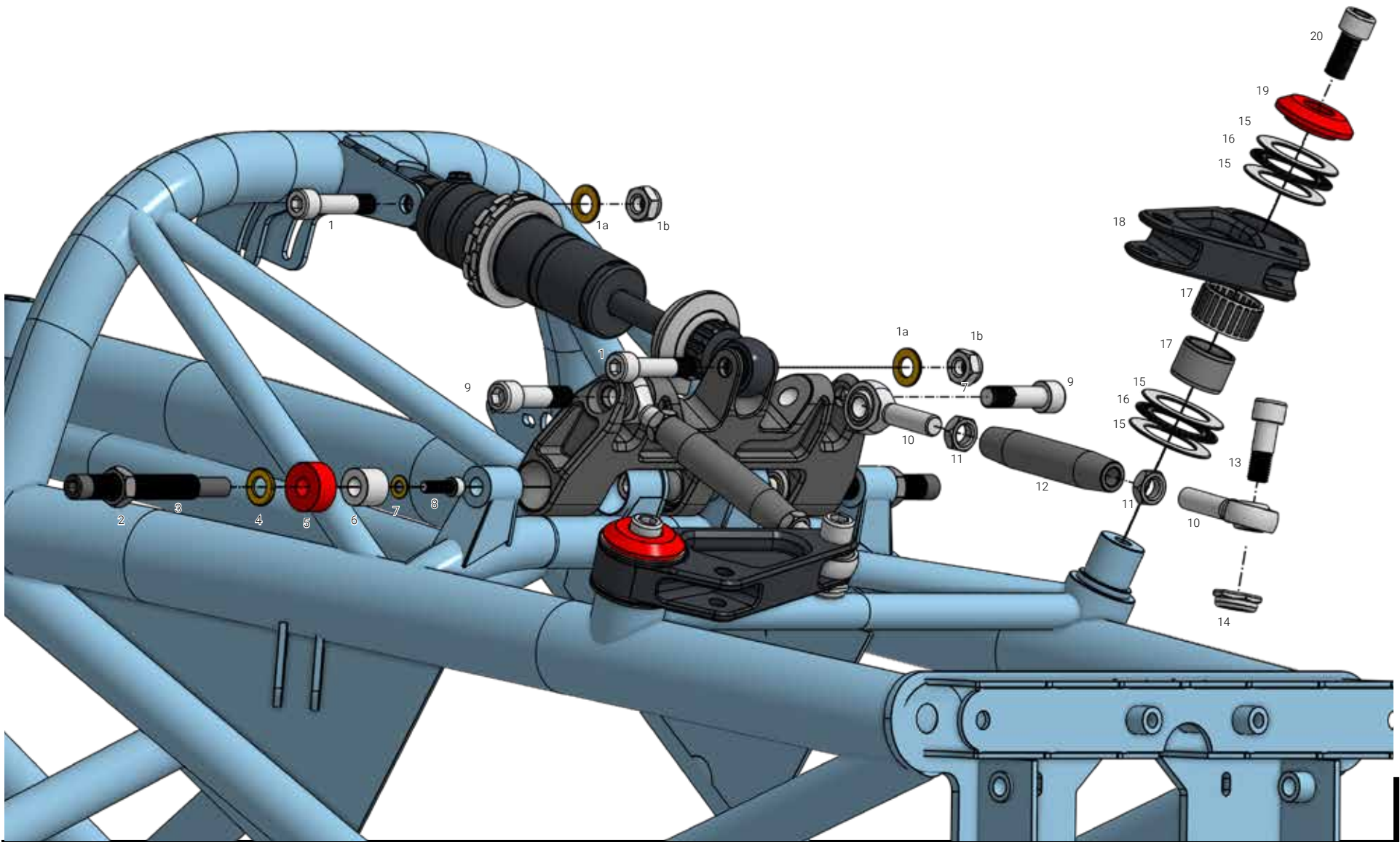
REAR CONTROL ARMS - SPARE PARTS

1	16020	X1 Rear Upper Control Arm - Left
1	16021	X1 Rear Upper Control Arm - Right
2	16018	X1 Rear Lower Control Arm - Left
2	16019	X1 Rear Lower Control Arm - Right
3	16017	X1 Pushrod
4		3/8 x 4 Inch SHCS (Cut down to 80mm)
5		7/16 x 2-1/2 Inch SHCS (Cut down to 35mm)
5a		7/16 Inch HT Washer
5b		7/16 Inch Slimloc Nut
6	RSMX6T	RSMX6T 3/8-7/16 RH FK RODEND
6a	RSMXL6T	RSMXL6T 3/8-7/16 LH FK RODEND
6b		7/16" RH Locking Nut
7	JMX7T	JMX7T 7/16 RH FK RODEND
8	JMX7LT	JMX7LT 7/16 LH RODEND
8a		7/16" LH Locking Nut
9	COM8T-MOCHU	Mochu COM8T 1/2" Spherical Bearing
10	1300-25	Internal 25mm Circlip for COM8T Bearings
11	16054	X1 Suspension Bush - Nylon
12	16056	X1 Suspension Bush Sleeve

FRONT SUSPENSION



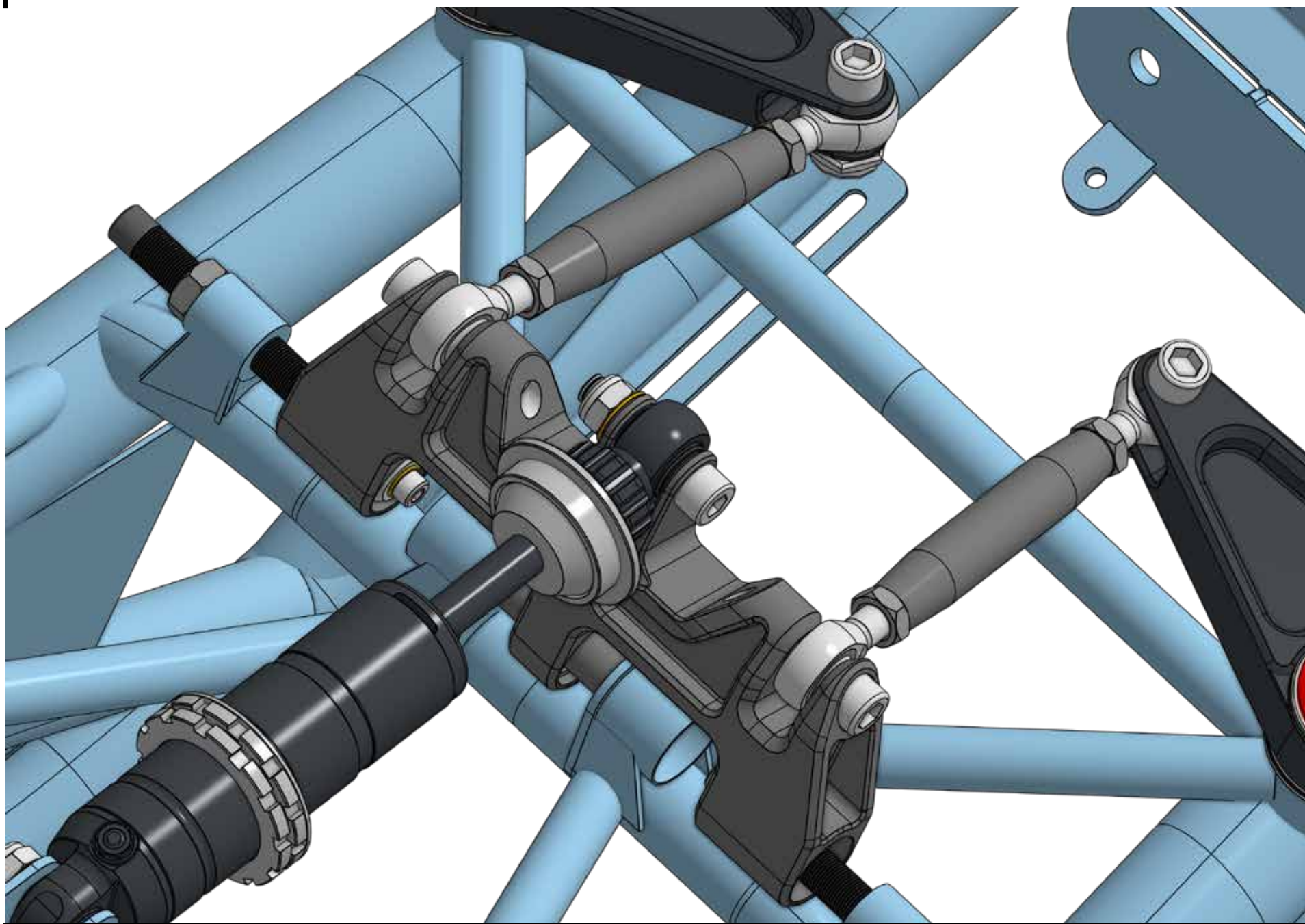
FRONT SUSPENSION - EXPLODED



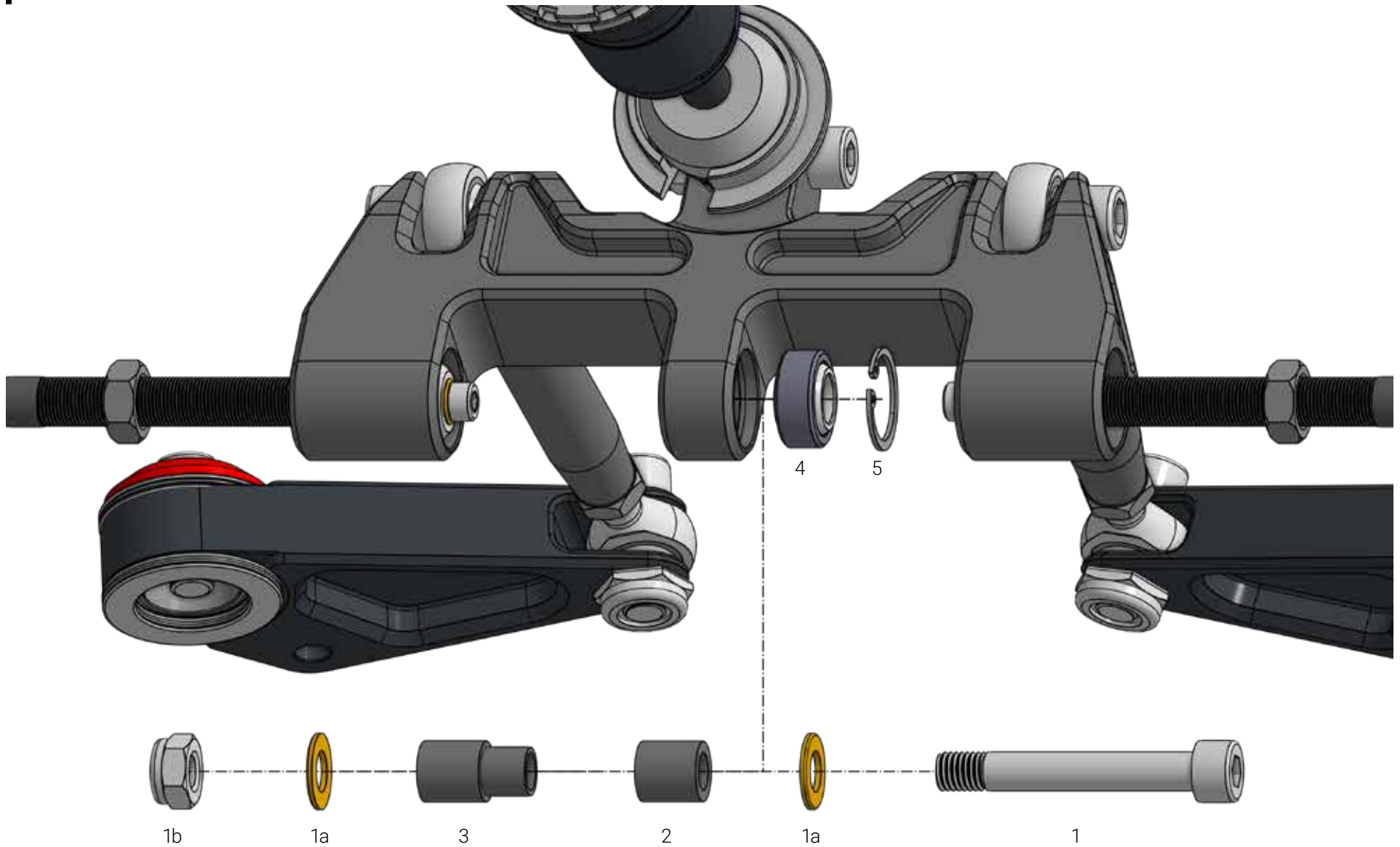
FRONT SUSPENSION - SPARE PARTS

1		M10 x 65mm SHCS (Cut down to 45mm)
1a		M10 HT Washer
1b		M10 Nyloc
2		1/2" Locking Nut
3	4014	Sway Bar Adjuster Pin Front
4		M10 HT Washer
5	16007	Nolethane Sway Bar Bushings
6	16071	Sway Bar Urethane Retainer
7		M6 HT Washer
8		M6 x 20mm SHCS (Blue Loctite)
9		7/16" x 2-1/2" (Cut down to 40mm)
10	JMX7T	JMX7T 7/16 RH FK RODEND
11		7/16" Locking Nut
12	16059	X1 Sway Bar Link - Front
13		7/16" x 2-1/2" (Cut down to 35mm)
14		7/16" Slimloc Nyloc
15	16004	BELL CRANK THRUST WASHER AS3047 NBS
16	16003	BELL CRANK THRUST BEARING AXK3047 NBS
17	16002	BELL CRANK RADIAL BEARING NKI25/20
18	16039	X1 Bell Crank Pivot - Front
19	16038	X1 Bell Crank Bearing Cap
20		7/16" x 1" SHCS

FRONT SUSPENSION MOUNTING



FRONT SUSPENSION MOUNTING - EXPLODED



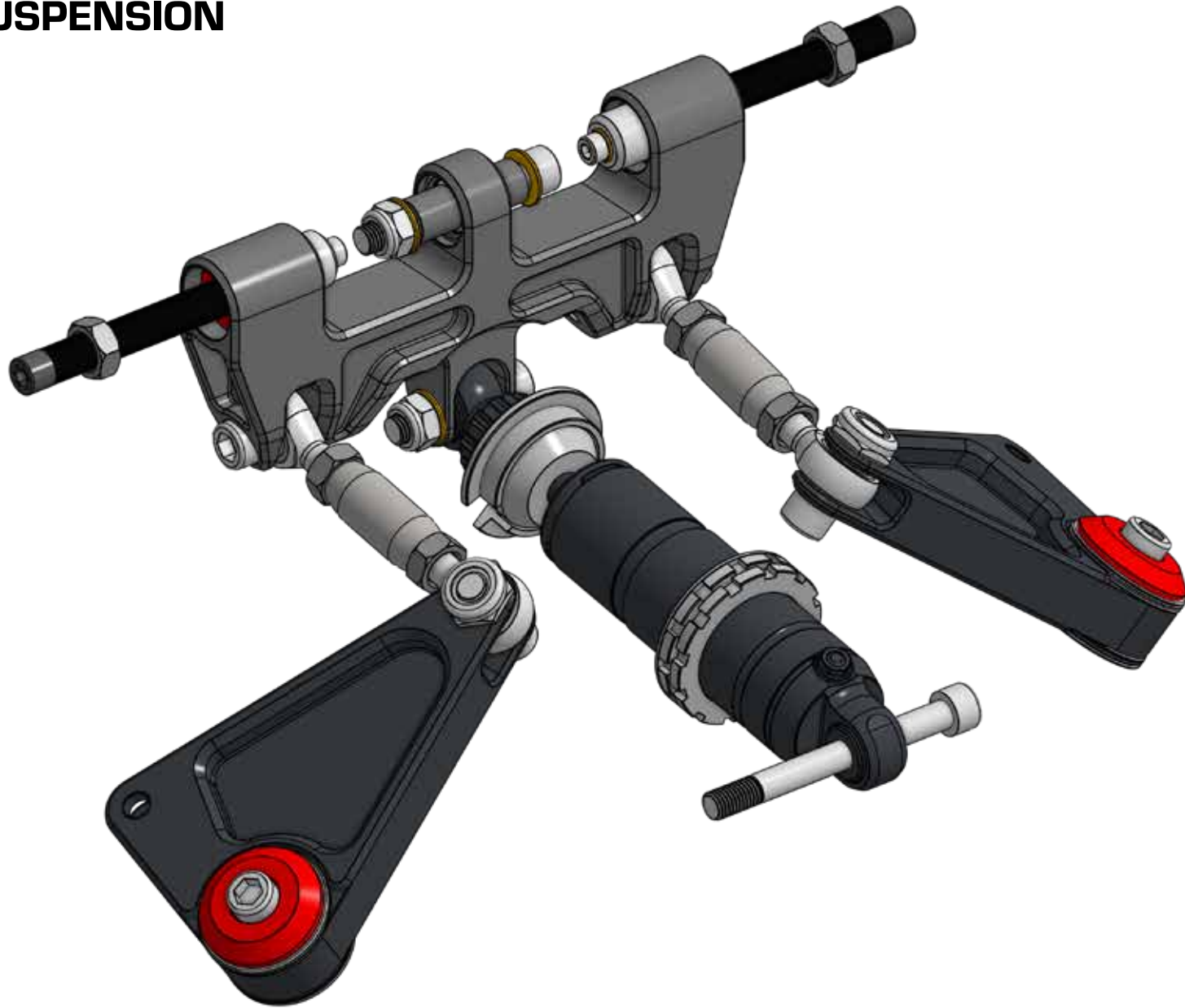
NOTES

1. The Sway Bar Mounting is the same for the rear suspension, including the sway bar itself.

FRONT SUSPENSION MOUNTING - SPARE PARTS

1		M10 x 90mm SHCS (Cut to 70mm)
1a		M10 HT Washer
1b		M10 Nyloc Nut
2	16057	X1 Sway Bar Bearing Spacer
3	16058	X1 Sway Bar Bearing Spigot
4	COM8T-MOCHU	Mochu COM8T 1/2" Spherical Bearing
5	1300-25	Internal 25mm Circlip for COM8T Bearings

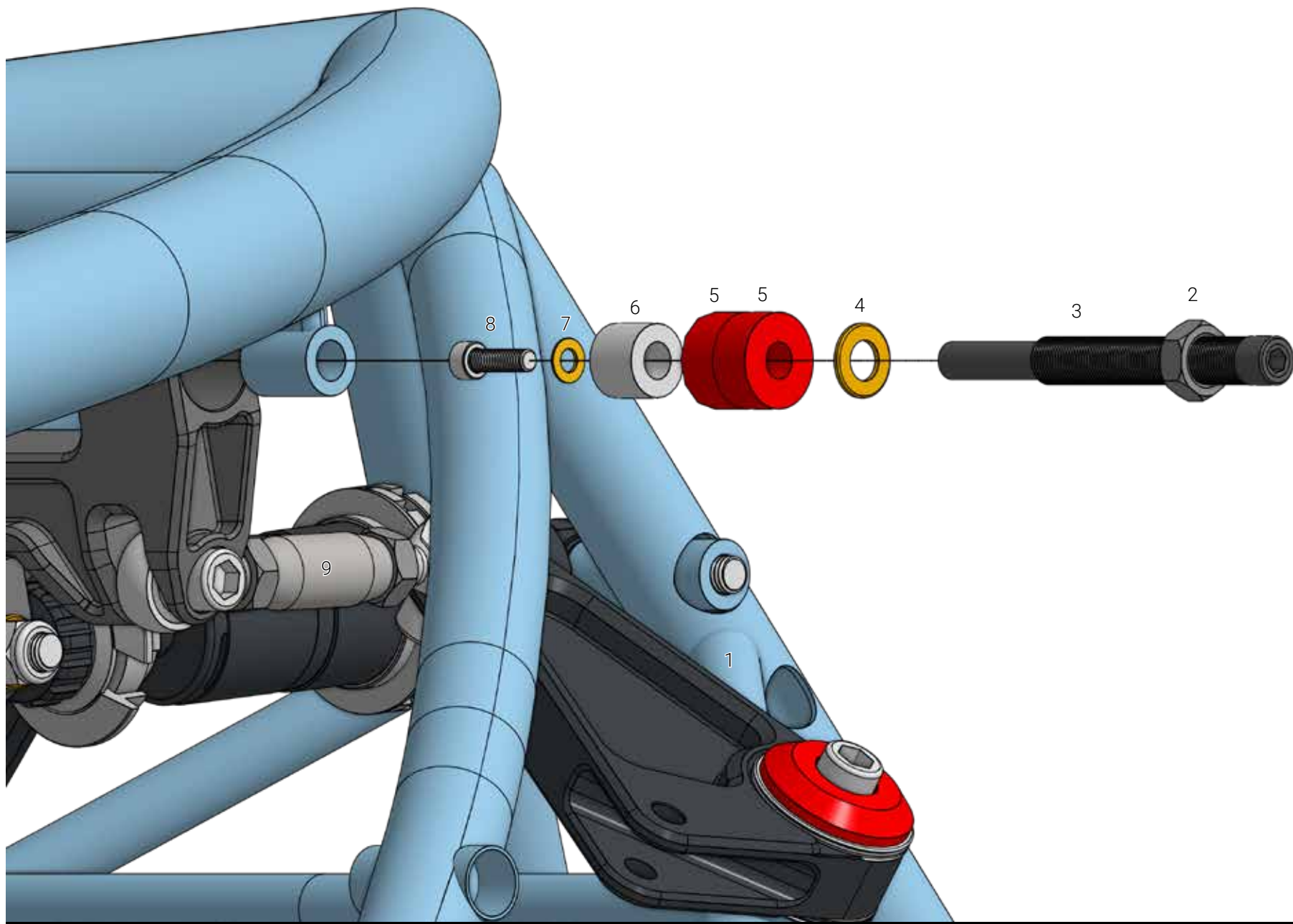
REAR SUSPENSION



NOTES

1. While the rear suspension layout is different, it only changes 3 parts listed below in the exploded diagram. Bell Cranks(1), Swaybar Links(9) and The Sway Bar Adjuster Pins(3).

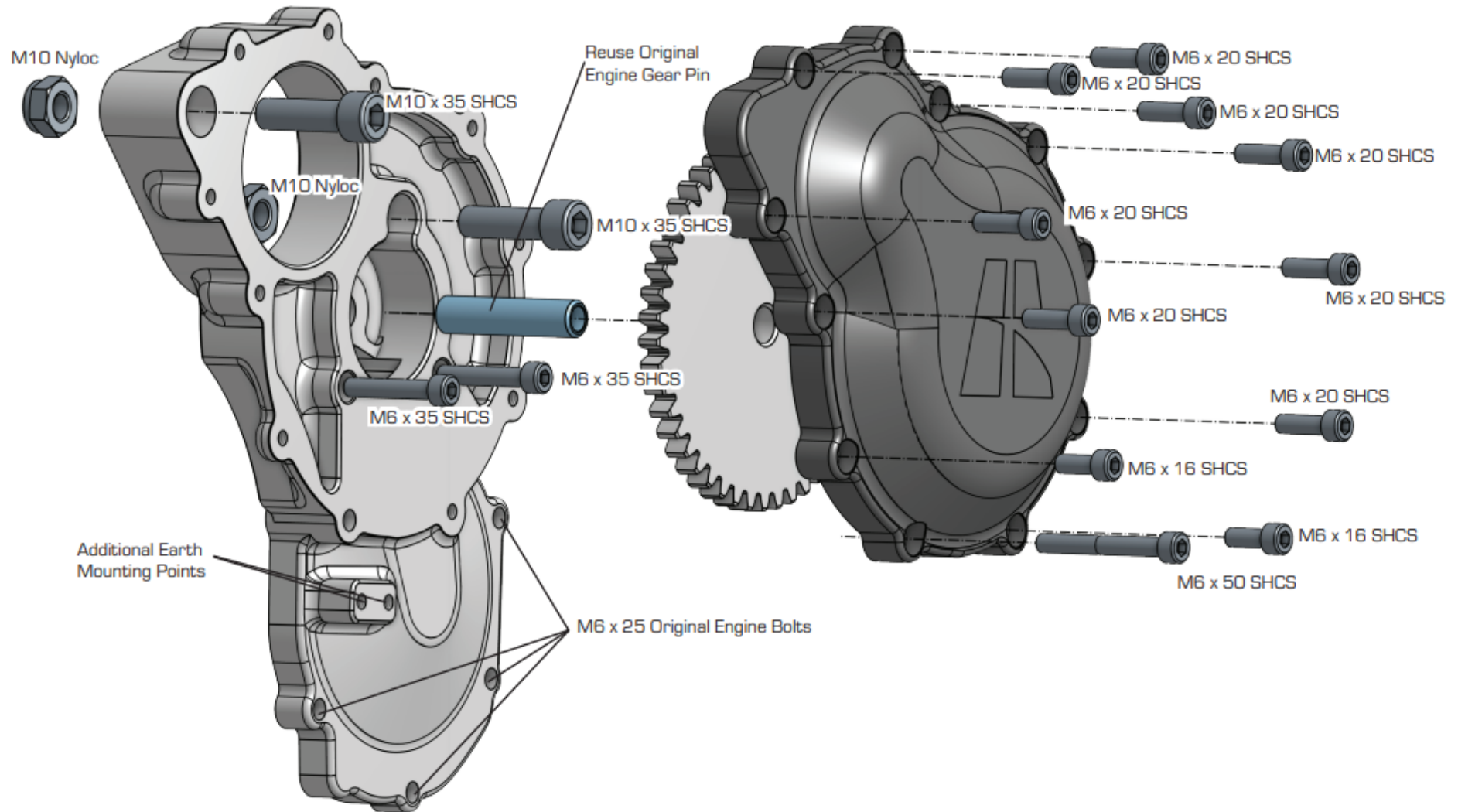
REAR SUSPENSION - EXPLODED



REAR SUSPENSION - SPARE PARTS

1	16040	X1 Bell Crank Pivot - Rear
2		1/2" Locking Nut
3	4024	Sway Bar Adjuster Pin Rear
4		M10 HT Washer
5	16007	Nolethane Sway Bar Bushings
6	16071	Sway Bar Urethane Retainer
7		M6 HT Washer
8		M6 x 20mm SHCS (Blue Loctite)
9	16060	X1 Sway Bar Link - Rear

STARTER MOTOR UPGRADE KIT - EXPLODED DIAGRAM



For more information, visit: www.hyperracer.com/garage